



SERVICE BULLETIN 34T-06-338-01

Contact: Mike Hankins, Director of Customer Relations
Mainship Corporation
mhankins@mainship.com

January 27, 2006

Models Affected: 34 Trawler – Hulls GM101 through GM 185

All boats in the affected serial number range should be checked.

It has come to our attention that the high water bilge pump system in the 34Trawler is not hooked to the remainder of the bilge pump system. The purpose of this bulletin is to provide direction to rewire the system so that the when the high water bilge pump turns on all the bilge pumps in the boat turn on at the same time.

The current configuration does not pose a problem with any of the individual bilge pumps operation. Reconfiguring the system will insure that all pumps will pump at the same time when the high water pump is activated.

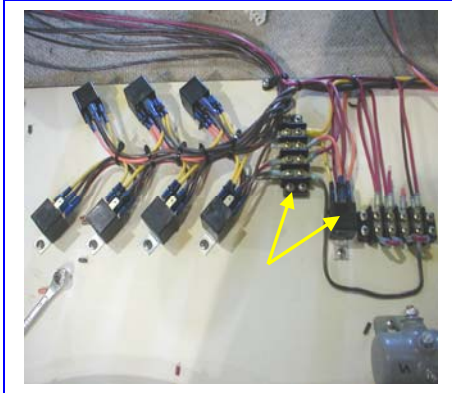
No parts are needed for this modification.

Please contact Customer Service should you have any questions. Thank you for your Assistance

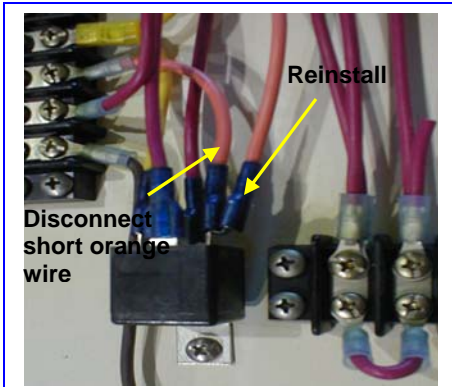
Mike Hankins
(912) 880-2116
(800) 578-0852

Safety: Safety Glasses

Step 1: Disconnect batteries prior to working.



Step 2: Remove the vent box from the engine room area just below and forward of the engine room access steps. Locate the power board behind the MDP. The high water relay and terminal is located high up on the power board, separate from other relay systems.

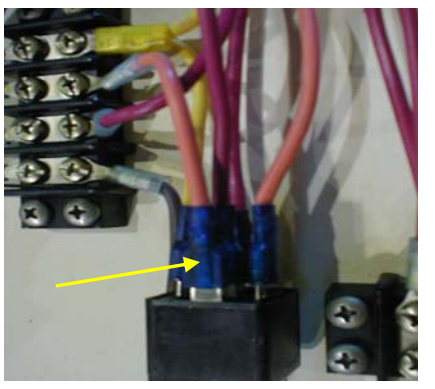


Step 3: Between the high water relay and the terminal strip, there is an orange 14ga jumper wire (about 3" long) that needs to be disconnected at the relay end. It is piggybacked with another orange wire. Remove the wire connected to relay and replace with long orange wire that is piggybacked.

Safety: Safety Glasses



Step 4: Take the red wire that is at the top of the relay and remove from relay. Place the short orange wire in this spot.



Step 5: Piggyback the red wire that was removed from this spot on with the orange wire.

Step 6: Reconnect batteries.